

Our ref. : QT-L19-0032

LOGISTICS SERVICE PROPOSAL

Hoon Kim / Logistics & Procurement Manager
Geo Seong Shipping & Engineering Co., Ltd.
tel : +82 55 682-0018~9
mail : gsse.logistics@gsse.co.kr
<http://www.gsse.co.kr>



Table of Contents

PART 1. SUPPLIER'S INFORMANTION	Page 3
1-1. Company Profile	
1-2. General Introduction	
1-3. GSSE Organization	
PART 2. EXPERIENCE AND CAPABILITY	Page 4
2-1. General Scope of Services	
2-2. Performance Track Records	
● Project Forwarding (Import) (p.4)	
● Project Forwarding (Export) (p.12)	
● Heavy Equipment handling (p.13)	
2-3. Reference Photos (p.15)	
PART 3. SERVICE EXECUTION PLAN	Page 21
3-1. Proposed Service Team Organization	
3-2. Service Execution Flow Chart	

PART 1. SUPPLIER'S INFORMATION

1-1. COMPANY PROFILE

- **Company Name** GEO SEONG SHIPPING & ENGINEERING CO., LTD.
- **Founded** March 13th, 1975
- **Headquarter's Address** 6, Majeon9-gil, Geoje-si, Gyeongsangnam-do, Korea 53323
- **CEO** Kyung Hee Won
- **Our Business** Repairing and Modification of Marine Equipment
Derrick Assembly
Offshore Solution Provide
Logistics & Procurement
Shipping Agency
- **Number of Employees** 300 employees

1-2. GENERAL INTRODUCTION



GSSE, GeoSeong Shipping & Engineering Co., Ltd. is one of the best qualified suppliers which provide engineering, procurement, fabrication and maintenance service for shipbuilding and offshore engineering in Geoje, Korea.

Since GSSE was founded in 1975 as a shipping agency and material supplier, our business scope has expanded gradually into engineering and fabrication field especially for offshore project.

Over 30 years GSSE has become a trusted partner in providing exceptional services and technical knowledge. Our clients rely on GSSE to deliver world-class solutions that optimize their assets, improve their competitive position, and increase their long-term business success.

Consistently rated as one of the safest contractors, GSSE's primary objective is to develop, execute, and maintain project on schedule, within budget, and with excellence.

"Serving you with Honesty, Sincerity and Dignity" as our motto, GSSE aims to become among the world's top of offshore solution provider by strengthening our value to satisfy our customer.

PART 2. EXPERIENCE AND CAPABILITY

2-1. GENERAL SCOPE OF SERVICES

- FREIGHT FORWARDING (AIR / SEA)
- IMPORTS / EXPORTS
- VESSEL / AIRCRAFT CHARTERING
- PROJECT FORWARDING
- EXPEDITING
- WAREHOUSING / PACKING
- CUSTOMS BROKERAGE / CONSULTANCY
- COURIER SERVICE

2-2. PERFORMANCE TRACK RECORD

● **Project Forwarding (Import)**

Project	Clients & Builder	Type	Work Performed	Year Ton / no. of shipment
GINA KROG (H. 6058)	NOV / DSME	Fixed platform	-Import *Drilling packages, Loose, Warranty, Spare parts, Derrick assembly	2016 7 ton / 6 shipment
MARINER (H. 6056)	AKER / DSME	Drillship	-Import *Drilling packages, Loose, Warranty, Spare parts, Derrick assembly	2016 ~ 2017 16 ton / 17 shipment
INPEX ICHTHYS (H. 6054)	LIEBHERR / DSME	FPSO	-Import *Crane part	2016 ~ 2017 19 ton / 14 shipment
Transocean#5 (H. 3511)	NOV / DSME	Drillship	-Import *Drilling packages, Loose, Warranty, Spare parts, Derrick assembly -Export *Drilling equipment.	2016 49 ton / 143 shipment
Transocean#4 (H. 3510)	NOV / DSME	Drillship	-Import *Drilling packages, Loose, Warranty, Spare parts, Derrick assembly -Export *Drilling equipment.	2016 ~ 2017 31 ton / 254 shipment

Transocean#3 (H. 3509)	NOV / DSME	Drillship	-Import *Drilling packages, Loose, Warranty, Spare parts, Derrick assembly -Export *Drilling equipment.	2016 ~ 2017 138ton / 132 shipment
Maersk Jack Up Rig (H.3305)	NOV / DSME	Rig	-Import *Drilling packages, Loose, Warranty, Spare parts, Derrick assembly -Export *Drilling equipment	2015 ~ 2017 62 ton / 241 shipment
Transocean#2 (H. 3508)	NOV / DSME	Drillship	-Import *Drilling packages, Loose, Warranty, Spare parts, Derrick assembly -Barge freight *DSME to Onsan / SaDeung or export -Export *Drilling equipment & AHC jig.	2014 ~ 2016 191ton / 220 shipment
Transocean#1 (H.3507)	NOV / DSME	Drillship	-Import *Drilling packages, Loose, Warranty, Spare parts, Derrick assembly -Barge freight *DSME to Onsan / SaDeung or export -Export *Drilling equipment & AHC jig.	2014 ~ 2015 394ton / 209 shipment
Seadrill#2 (H.3624)	NOV / DSME	Drillship	-Import *Drilling packages, Loose, Warranty, Spare parts, Derrick assembly -Barge freight *DSME to Onsan / SaDeung or export -Export *Drilling equipment & AHC jig	2014 ~ 2018 165 ton / 398 shipment
Seadrill#1 (H. 3623)	NOV / DSME	Drillship	-Import *Drilling packages, Loose, Warranty, Spare parts, Derrick assembly -Barge freight *DSME to Onsan / SaDeung or export -Export *Drilling equipment & AHC jig	2014 ~ 2019 226 ton / 265 shipment
Sonangol#2 (H.3621)	NOV / DSME	Drillship	-Import *Drilling packages, Loose, Warranty, Spare parts, Derrick assembly -Barge freight *DSME to Onsan / SaDeung or export -Export	2015 ~ 2018 130 ton / 248 shipment

			*Drilling equipment & AHC jig	
Sonango#1 (H.3620)	NOV / DSME	Drillship	-Import *Drilling packages, Loose, Warranty, Spare parts, Derrick assembly -Barge freight *DSME to Onsan / SaDeung or export -Export *Drilling equipment & AHC jig	2014 ~ 2017 396 ton / 263 shipment
Atwood#4 (H.3622)	NOV / DSME	Drillship	-Import *Drilling packages, Loose, Warranty, Spare parts, Derrick assembly -Barge freight *DSME to Onsan / SaDeung or export -Export *Drilling equipment & AHC jig	2014 ~ 2017 225 ton / 259 shipment
Atwood#3 (H.3619)	NOV / DSME	Drillship	-Import *Drilling packages, Loose, Warranty, Spare parts, Derrick assembly -Barge freight *DSME to Onsan / SaDeung or export -Export *Drilling equipment & AHC jig	2014 ~ 2018 283 ton / 169 shipment
Vantage (H.3618)	AKER / DSME	Drillship	-Import *Drilling packages, Loose, Warranty, Spare parts, Derrick assembly	2013 ~ 2019 8 ton / 11 shipment
Atwood#2 (H.3617)	NOV / DSME	Drillship	-Import *Drilling packages, Loose, Warranty, Spare parts, Derrick assembly -Barge freight *DSME to Onsan / SaDeung or export -Export *Drilling equipment & AHC jig	2013 ~ 2014 349ton / 65 shipment
Deep Sea Aberdeen (H.3033)	Odfjell Drilling, NOV / DSME	Semi Rig	-Import *OFE, Ship loose, Warranty, Spare parts -Export *Damaged, Defect, Rental Eq' in return -Customs clearance *Duty Exemption -Warehousing (Bonded) *Import shipment, Local supplies -Packing & Consolidating for transport *Palletizing & Crating & Re-enforcing *Labeling / Shipping marks	2013 ~ 2014 1047ton / 272 shipment

			-In-Land trucking -Shipping agency *Ship's Entry & Depart Clearance / Crew Joining & Repatriation / Immigration / Customs / Quarantine / Port Authority / Launching Boat / Tug boat / Pilot / Marine bunkering / Fresh water supply	
Songa#4 (H.3035)	AKER / DSME	Semi Rig	-Import *Drilling packages, Loose, Warranty, Spare parts, Derrick assembly	2013 ~ 2016 43 ton / 27 shipment
Songa#3 (H.3034)	AKER / DSME	Semi Rig	-Import *Drilling packages, Loose, Warranty, Spare parts, Derrick assembly	2013 ~ 2015 143 ton / 33 shipment
Songa#2 (H.3032)	AKER / DSME	Semi Rig	-Import *Drilling packages, Loose, Warranty, Spare parts, Derrick assembly	2013 ~ 2015 48ton / 45 shipment
Songa#1 (H.3031)	AKER / DSME	Semi Rig	-Import *Drilling packages, Loose, Warranty, Spare parts, Derrick assembly	2013 ~ 2014 59ton / 48 shipment
Transocean Deepwater#1~2 (H.3612, 3613)	AKER / DSME	Drillship	-Import *Drilling packages, Loose, Warranty, Spare parts, Derrick assembly	2012 ~ 2013 110ton / 33 shipment
Atwood#1 (H.3614)	NOV / DSME	Drillship	-Import *Drilling packages, Loose, Warranty, Spare parts, Derrick assembly -Barge freight *DSME to Onsan / SaDeung or export -Export *Drilling equipment & AHC jig	2012 ~ 2013 469ton / 155 shipment
Tungsten (H.3615)	AKER / DSME	Drillship	-Import *Drilling packages, Loose, Warranty, Spare parts, Derrick assembly	2012 ~ 2013 106ton / 70 shipment
Deep Sea Stavanger (H.3025)	Odfjell Drilling / DSME	Semi-Rig	-Import *OFE, Drilling packages, Loose, Warranty, Spare parts, Derrick assembly -Export *Damaged, Defect, in return *Transport cradle in return for re-use. -Domestic delivery *KBC(Knuckle Boom Crane) BOP Transporter & other heavy Eq's -Riser pipe load out operation -Customs clearance	2009 ~ 2010 6,595ton / 527 shipment

			*Duty Exemption applied	
Deep Sea Atlantic (H.3023)	Odfjell Drilling / DSME	Semi-Rig	-Import *OFE, Drilling packages, Loose, Warranty, Spare parts, Derrick assembly -Export *Damaged, Defect, in return *Transport cradle in return for re-use. -Domestic delivery *KBC(Knuckle Boom Crane) BOP Transporter & other heavy Eq's -Riser pipe load out operation -Customs clearance *Duty Exemption applied	2007 ~ 2008 4,985ton / 414 shipment
West Aquarius (Seadrill 10)	DSME	Semi-Rig	-Expediting of Ex-work -Import *Drilling packages, Loose, Warranty, Spare parts -Export *Damaged, Defect, in return.	2007 ~ 2008 2,389ton / 95 shipment
West Hercules (Seadrill 9)	DSME	Semi-Rig	-Expediting of Ex-work -Import *Drilling packages, Loose, Warranty, Spare parts -Export *Damaged, Defect, in return. *Transport cradle in return for re-use.	2007 ~ 2008 2,655ton / 127 shipment
Knuckle Boom Crane	NOVN / NOVK	n/a	Import for Knuckle Boom Crane	2012 ~ 2015 8,378,ton / 943 shipment
WestMira (H.S672)	AKER / HSHI	Semi Rig	-Import *Drilling packages, Loose, Warranty, Spare parts, Derrick assembly	2013 ~ 2015 46ton / 61 shipment
Diamond (H.2704)	NOV / HHI	SemiRig	-Import *Drilling packages, Loose, Warranty, Spare parts, Derrick assembly	2015 ~ 2016 2ton / 14 shipment
FredOlsen (H.2620)	NOV / HHI	SemiRig	-Import *Drilling packages, Loose, Warranty, Spare parts, Derrick assembly	2013 ~ 2016 62ton / 34 shipment
Rowan#4 (H.2564)	NOV / HHI	Drillship	-Import *Drilling packages, Loose, Warranty, Spare parts, Derrick assembly	2014 ~ 2015 3ton / 6 shipment
Rowan#3 (H.2563)	NOV / HHI	Drillship	-Import *Drilling packages, Loose, Warranty, Spare	2013 ~ 2014 12ton /

			parts, Derrick assembly	5 shipment
Rowan#2 (H.2560)	NOV / HHI	Drillship	-Import *Drilling packages, Loose, Warranty, Spare parts, Derrick assembly	2013 ~ 2014 2ton / 16 shipment
Rowan#1 (H.2559)	NOV / HHI	Drillship	-Import *Drilling packages, Loose, Warranty, Spare parts, Derrick assembly	2013 5ton / 38 shipment
FredOlsen#1 (H.2546)	NOV / HHI	Drillship	-Import *Drilling packages, Loose, Warranty, Spare parts, Derrick assembly	2013 ~ 2014 15ton / 50 shipment
Noble#4 (H.2508)	NOV / HHI	Drillship	-Import *Drilling packages, Loose, Warranty, Spare parts, Derrick assembly	2013 ~ 2014 5ton / 12 shipment
Noble#3 (H.2507)	NOV / HHI	Drillship	-Import *Drilling packages, Loose, Warranty, Spare parts, Derrick assembly	2013 ~ 2014 6ton / 40 shipment
Noble#2 (H.2506)	NOV / HHI	Drillship	-Import *Drilling packages, Loose, Warranty, Spare parts, Derrick assembly	2013 ~ 2014 6ton / 55 shipment
Noble#1 (H.2505)	NOV / HHI	Drillship	-Import *Drilling packages, Loose, Warranty, Spare parts, Derrick assembly	2013 2ton / 53 shipment
Daimond#3 (H.2512)	NOV / HHI	Drillship	-Import *Drilling packages, Loose, Warranty, Spare parts, Derrick assembly	2013 ~ 2014 2ton / 18 shipment
Daimond#2 (H.2504)	NOV / HHI	Drillship	-Import *Drilling packages, Loose, Warranty, Spare parts, Derrick assembly	2013 ~ 2014 3ton / 45 shipment
Daimond#1 (H.2503)	NOV / HHI	Drillship	-Import *Drilling packages, Loose, Warranty, Spare parts, Derrick assembly	2012 ~ 2013 16ton / 47 shipment
Deep Sea Metro#1 Deep Sea Metro#2 (H.2228, 2229)	Odfjell Drilling / HHI	Drillship	-Import *OFE, Ship loose, Warranty, Spare parts -Export *Damaged, Defect, Rental Eq' in return -Customs clearance *Duty Exemption -Warehousing (Bonded) *Import shipment, Local supplies -Packing & Consolidating for transport *Palletizing & Crating & Re-enforcing *Labeling / Shipping marks -In-Land trucking	2009 ~ 2011 8,678ton / 409 shipment

			-Shipping agency *Ship's Entry & Depart Clearance / Crew Joining & Repatriation / Immigration / Customs / Quarantine / Port Authority / Launching Boat / Tug boat / Pilot / Marine bunkering / Fresh water supply	
Deep Sea Metro#1 (H.2228)	Woodside / HHI	Drillship	-Barge freight *Busan to Well location at East sea Korea *Trucking / Customs clearance incl. MKE Approval / Loading permission *Stevedore / Lashing / Inventory check *Back load shipment handling -Shipping agency *Crew Joining & Repatriation / Immigration / Customs / Courier delivery	2011 330ton / 6 shipment
BP MADDOG#2 (2217)	BP / SHI	FPU	-Import *OFE, Ship loose, Warranty, Spare parts	2020 1 ton 3 shipments
Deepsea Nordkapp (H.2097)	Odfjell / SHI	Semirig	-Import *OFE, Ship loose, Warranty, Spare parts -Local transportation -Loading permission onto the rig	2018-2019 155ton / 86 shipment
Prelude (H.7100)	Shell / SHI	FLNG	-Import *Medical supplies	2017 5 ton / 7 shipment
EGINA (H.2089)	Liebherr / SHI	FPSO	-Import *Crane parts	2017 0.5 ton / 7 shipment
INPEX (H.7108)	INPEX / SHI	FPSO	-Import *OFE supplies	2016 ~ 2017 13 ton / 26 shipment
Stampede (H.2129)	Modec / SHI	Semi-rig	-Import *OFE supplies	2014 ~ 2016 15,664ton / 140 shipment
QGOG#1 (H.7086)	NOV / SHI	Drillship	-Import *Drilling packages, Loose, Warranty, Spare parts, Derrick assembly -Export *Transport cradle in return for re-use.	2011 4,804ton / 124 shipment
Pride#4 (H.7084)	NOV / SHI	Drillship	-Import *Drilling packages, Loose, Warranty, Spare parts, Derrick assembly -Export *Damaged, Defect, in return	2010 ~ 2011 5,134ton / 220 shipment

			*Transport cradle in return for re-use.	
Stena Drillmax#4 (H.7078)	NOV / SHI	Drillship	-Import *Drilling packages, Loose, Warranty, Spare parts -Export *Damaged, Defect, in return *Transport cradle in return for re-use.	2010 ~ 2011 2,188ton / 204 shipment
Cardiff#3 (H.7076)	NOV / SHI	Drillship	-Import *Drilling packages, Loose, Warranty, Spare parts -Export *Damaged, Defect, in return *Transport cradle in return for re-use.	2010 ~ 2011 2,246ton / 256 shipment
PDC#4 (H.7081)	NOV / SHI	Drillship	-Import *Drilling packages, Loose, Warranty, Spare parts, Derrick assembly -Export *Damaged, Defect, in return *Transport cradle in return for re-use.	2010 ~ 2011 3,340ton / 309 shipment
PDC#3	NOV / SHI	Drillship	-Import *Derrick assembly by Bulk carrier & Container shipment *3 rd party surveyor attendance	2010 1,876ton / 12 shipment
Cardiff#2	NOV / SHI	Drillship	-Import *Derrick assembly by Bulk carrier & Container shipment *3 rd party surveyor attendance	2010 973ton / 4 shipment
Schahin#1	NOV / SHI	Drillship	-Import *Derrick assembly by Bulk carrier & Container shipment *3 rd party surveyor attendance	2010 1,147ton / 22 shipment
PDC#1	NOV / SHI	Drillship	-Import *Derrick assembly by Bulk carrier & Container shipment *3 rd party surveyor attendance	2009 ~ 2010 4,753ton / 272 shipment
Saipem12000	NOV / SHI	Drillship	-Import *Drilling packages, Loose, Warranty, Spare parts, Derrick assembly	2009 ~ 2010 4,295 ton / 306 shipment
West Pheonix West Eminence	Akersolutions / SHI	Semi-Rig	-Import *Drilling packages, Loose, Warranty, Spare parts -Export *Damaged, Defect, in return.	2007~2009 2,398ton / 95 shipment

- **Project Forwarding (Export)**

Year	Shipment	Export country	Ton
2020	14	6	16
2019	21	10	31
2018	10	5	72
2017	14	8	583
2016	48	12	337
2015	77	22	1,537
2014	89	27	1,189
2013	76	19	578
2012	88	11	1,015
2011	103	22	1,890
2010	78	16	1,898
2009	57	9	745

Heavy Equipment Handling

Manufacturer	Clients	Equipment	Work Performed	Year / Weight
GE, ALFALAVAL, FBM, GEA, KELVION, SIEMENS	TCO / CHEVRON	ACHE (Air Cooled Heat Exchanger)	-Load-out operation by 320 ton Crawler crane -Multi modal transport *GSSE to DSME & DSHI by barge	2017 ~ 2018 9,086 ton / 48 shipment
Heerema	Dong	Lifting Gears	-Load-out operation by 300 ton Mobile crane -Multi modal transport *DSME to Busan New port by barge *Direct loading onto a bulk vessel *Korea – Belgium – Netherland multimodal international transportation	2016 ~ 2017 555 ton / 2 shipment
Liebherr	Liebherr	Knuckle Boom Crane jig	-Load-out operation by 500 ton Floating crane -Multi modal transport *DSME to Busan New port by barge	2015 160 ton / 2 shipment
AKER MH	Pentagon Norway	DAT Cylinder	-Multi modal transport *Chartered air craft to Korea by 3 times & chartered vessel to Qingdao	2014 178 ton / 3 shipment
NOV	Pentagon Norway	AHC crane jig	-Load-out operation by 500 ton Floating crane -Multi modal transport *DSME to Busan New port by barge	2013 ~ 2015 90 ton / 3 shipment
AKER MH	Pentagon Norway	Accumulator	-Load-Out procedure *Urgent air transportation from DSME to AMS	2013 54 ton / 2 shipments
NOV Korea	Slade shipping	Kingpost Crane #1~6	-Load-Out procedure -Multi modal transport *Module transport/ Heavy tractor -Full chartered to Dalian, China -3rd party surveyor attendance	2012 690 ton by 8 shipment
NOV Korea	K+N Norway	Pedestal	-Proactive dimension check -Extra long chassis trailer -Voyage chartered to Thailand -3rd party surveyor attendance	2012 82ton
NOV Korea	Seafront	Burner Boom	-Load-Out procedure -Multi modal transport *12 axle Module with Heavy tractor	2011 ~ 2012 163ton by 2 shipment

			-Full chartered to Nantong, China -3rd party surveyor attendance	
STX Engine	K+N Norway	Generators	-Flat Rack shipment to Bilbao, Spain	2011
NOV Korea	NOV Norway	SHWE Derrick complete	-Load-Out procedure *By 1200 ton Floating crane *Rental of 4 x 110ton Crosby shackle -Barge transport to HHI, Ulsan -3rd party surveyor attendance	2011 350ton
MCT Eng.	Grieg Logistics	KBC(Knuckle Boom Crane)	-Low Bed Trailer with police escort -Load-out attending / Reporting -Voyage chartered to Singapore -3rd party surveyor attendance	2011 270ton by 2 shipment
MCT Eng.	Seafront	X-mas & BOP Crane	-Proactive dimension check -Extra long chassis trailer -Full chartered to Nantong, China -3rd party surveyor attendance	2011 66ton
DaeWha Eng.	AML	Propeller	-RO/RO by Mafi-trailer -Transported by Car Carrier to Rotterdam	2010
Akersolutions	Seafront	RGC(Riser Gantry Crane) Cradle	-Load-out operation by 500 ton Floating crane -Sea-fastening/Lashing -Site coordination with Shipyard-Captain	2010 ~ 2011 260ton by 2 shipment
Tong-il Boiler	Akersolutions	Bulk Tanks & others	-Low Bed Trailer with police escort -Full chartered to Dalian, China -3rd party surveyor attendance	2010~2011 450ton by 2 shipment
Hochang Mach.	Sevan Marine	BOP Transporter	-Load-Out procedure *By 24 axle module transporter -Ocean Barge transport to Nantong, China by RO/RO operation -Sea-fastening/Lashing -3rd party surveyor attendance	2008 225ton by 1 shipment
Hochang Mach.	Odfjell Drilling	KBC (Knuckle Boom Crane) BOP Overhead Crane BOP Trolley	Load-Out procedure *By RO/RO + LO/LO operation *48 axle module transporter -Barge transport to DSME -Sea-fastening/Lashing -3rd party surveyor attendance	2008 380ton by 3 shipment

2-3. REFERENCE PHOTOS

EQUIPMENT NAME / MANF. (YEAR)	EQUIPMENT NAME / MANF. (YEAR)
 <p data-bbox="159 831 750 869">Air Cooled Heat Exchanger (ACHE) / TCO (2018)</p>	 <p data-bbox="853 831 1428 869">KNUCKLEBOOM CRANE JIG / LIEBHERR (2018)</p>
 <p data-bbox="183 1391 726 1429">LIFTING GEARS (CSATING) / TECHNIP (2017)</p>	 <p data-bbox="925 1391 1348 1429">LIFTING GERARS / TECHNIP (2017)</p>
 <p data-bbox="247 1946 662 1984">LIFTING GEARS / TECHNIP (2016)</p>	 <p data-bbox="925 1946 1348 1984">WORK BOAT / MITSUBISHI (2017)</p>



GUNFLOAT & KEEL / MITSUBISHI (2016)



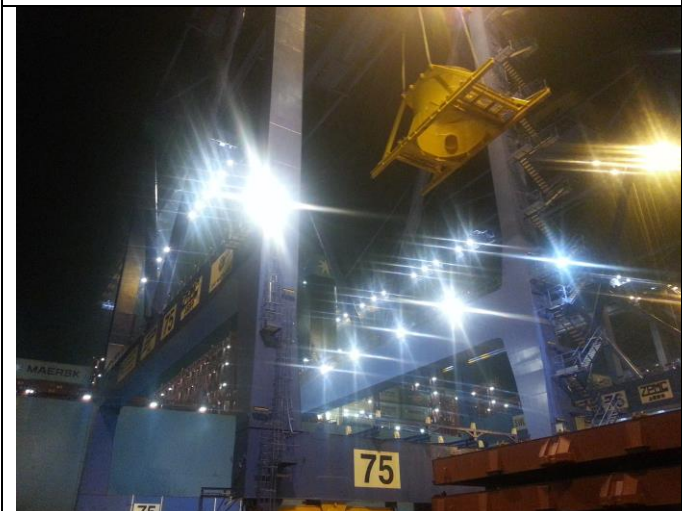
WORK BOAT / MITSUBISHI (2016)



KNUCKLE BOOM CRANE JIG / LIEBHERR (2015)



DAT Cylinder / AKER MH (2014)



AHC CRANE JIG / NOV (2014)



Accumulator / AKER MH (2013)



KING POST CRANE / NOV KOREA (2012)



PEDESTAL / NOV KOREA (2012)



BURNER BOOM / NOV KOREA (2011~2012)



GENERATOR / STX ENGINE (2011)



SWHE DERRICK / NOV KOREA (2011)



KBC (BY RO/RO) / MCT ENG.(2011)



KBC / MCT ENG. (2011)



X-MAS CRANE / MCT ENG. (2011)



PROPELLER ON MAFI / DAEWHA ENG (2010)



RGC (RISER GANTRY CRANE) CRADLE (2010)



RGC CRADLE / AKERSOLUTIONS (2010~11)



BULK TANKS / AKERSOLUTIONS (2010~11)



BULK TANKS / AKERSOLUTIONS (2010~11)



BOP TRANSPORTER / HOCHANG MACH (2008)



KNUCKLE BOOM CRANE / HOCHANG MACH. (2008)



BOP OVERHEAD CRANE / HOCHANG MACH. (2008)



APV on OT CONT. / NK (2010~2012)



SURGE TANKS / Y&S (2011~2012)



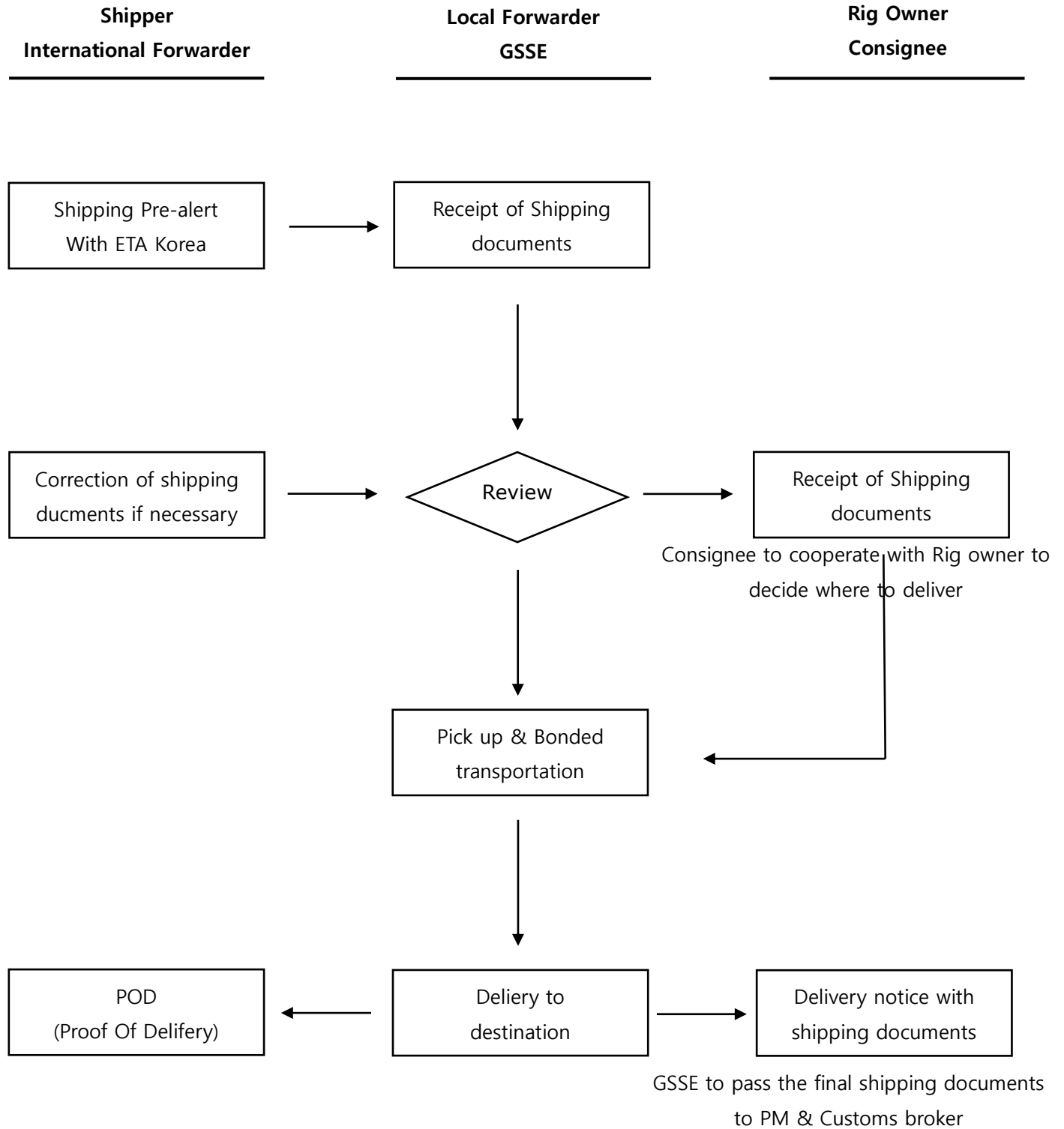
AIR CHARTER / DAT HOSES (2012)



FRAME ON FR BEDS / ODFJELL (2011)

PART 3. SERVICE EXECUTION PLAN

3-1. SERVICE EXECUTION FLOW CHART (for Import)



3-2. SERVICE EXECUTION FLOW CHART (for Export)

